

# MI School Data – Portal Demo

The screenshot shows the MI School Data portal interface. The top navigation bar includes the logo, 'Welcome', and links for 'Help', 'MDE', 'CEPI', and 'MICHIGAN.GOV'. A 'Login' button is located in the top left. The main content area is divided into a left sidebar with a menu and a main content area with featured reports and category tiles.

**1 Site info & news** points to the 'How-Tos & News' and 'Early Childhood' links in the sidebar.

**2 K12-Postsecondary Outcomes** points to the 'Postsecondary Outcomes' link in the sidebar, which includes:

- College Enrollment by High School
- 24 College Credits
- College Remedial Coursework

**3 Postsecondary** points to the 'Postsecondary' link in the sidebar, which includes:

- College Undergrad Enrollment
- College Transfer

**4 Data Files (Public)** points to the 'Data Files' link in the sidebar, which includes:

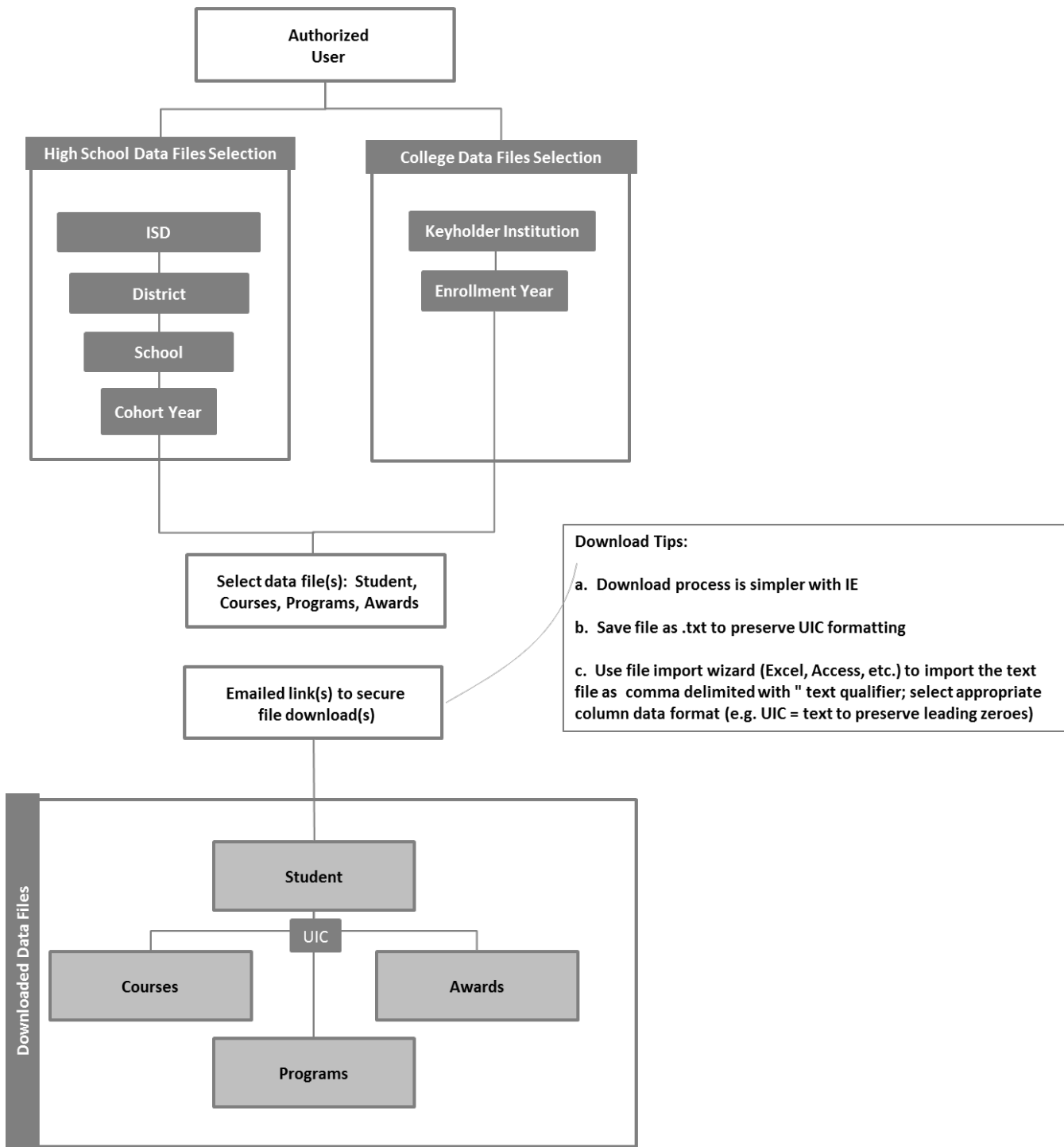
- K12 Data Files
- College Data Files

**5 Data Files (Secure Login)** points to the 'Data Files' link in the sidebar, which includes:

- Student Pathways

The main content area features a '2012-13 Student Attendance' report, a 'Students Proficient on MME (in all subjects)' banner showing 17.4%, and category tiles for 'Early Childhood', 'Kindergarten - 12th Grade', 'Postsecondary', and 'Workforce'. The URL [www.mischooldata.org](http://www.mischooldata.org) is displayed at the bottom right.

# Student Pathways (secure login)



## Recommendations for Institutional Users:

- Review usage policies under FERPA - 34 CFR Part 99 (data are to be used for purposes of program audit and evaluation) prior to usage.
- Start downloading the data files and test the data - check against school STARR submission.
- Use the data, improve your STARR extract data, and provide feedback to CEPI/Adult Learner Workgroup with issues or suggestions for improvement.