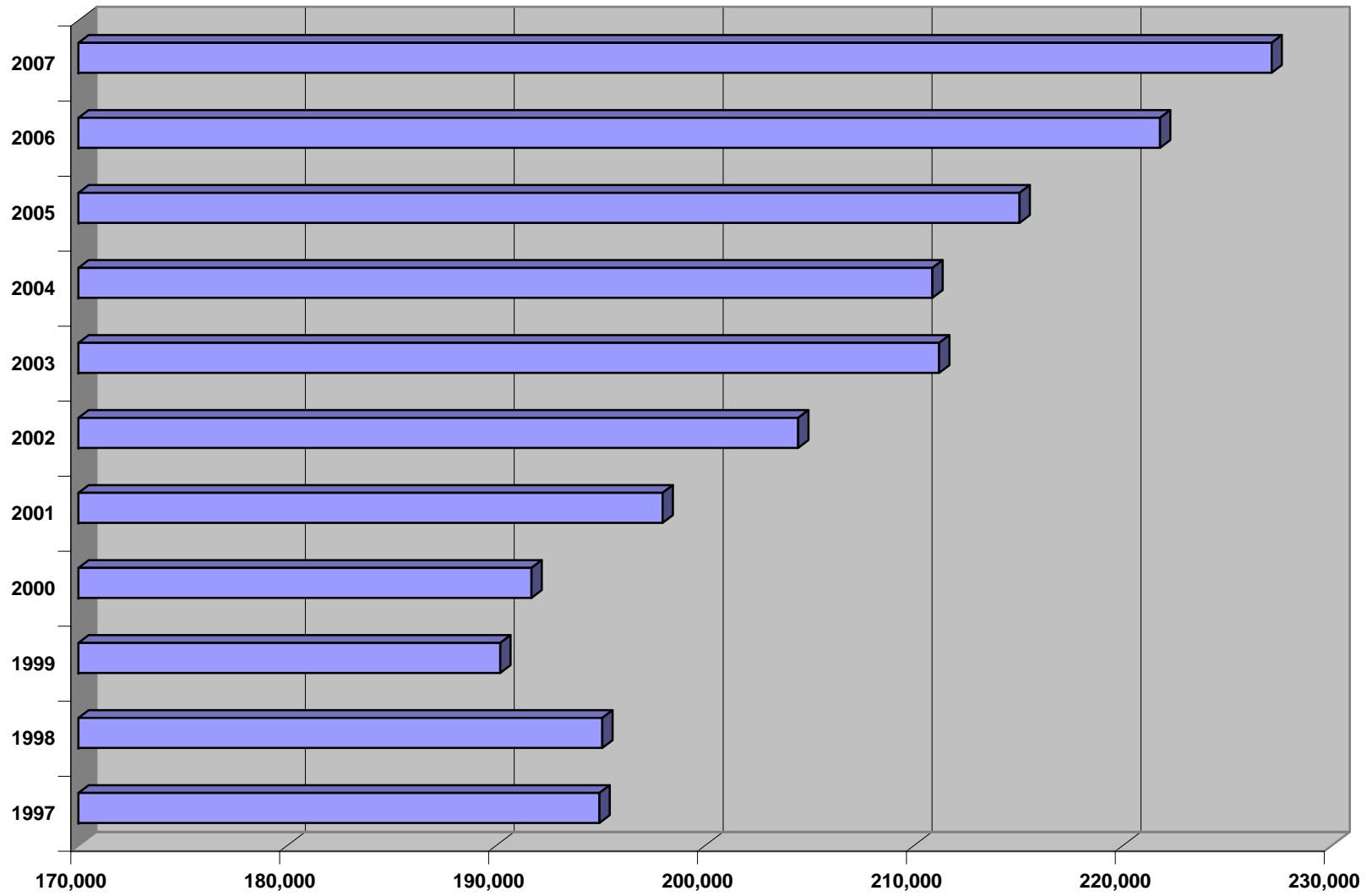


## TEN YEAR HISTORY OF FALL ENROLLMENTS

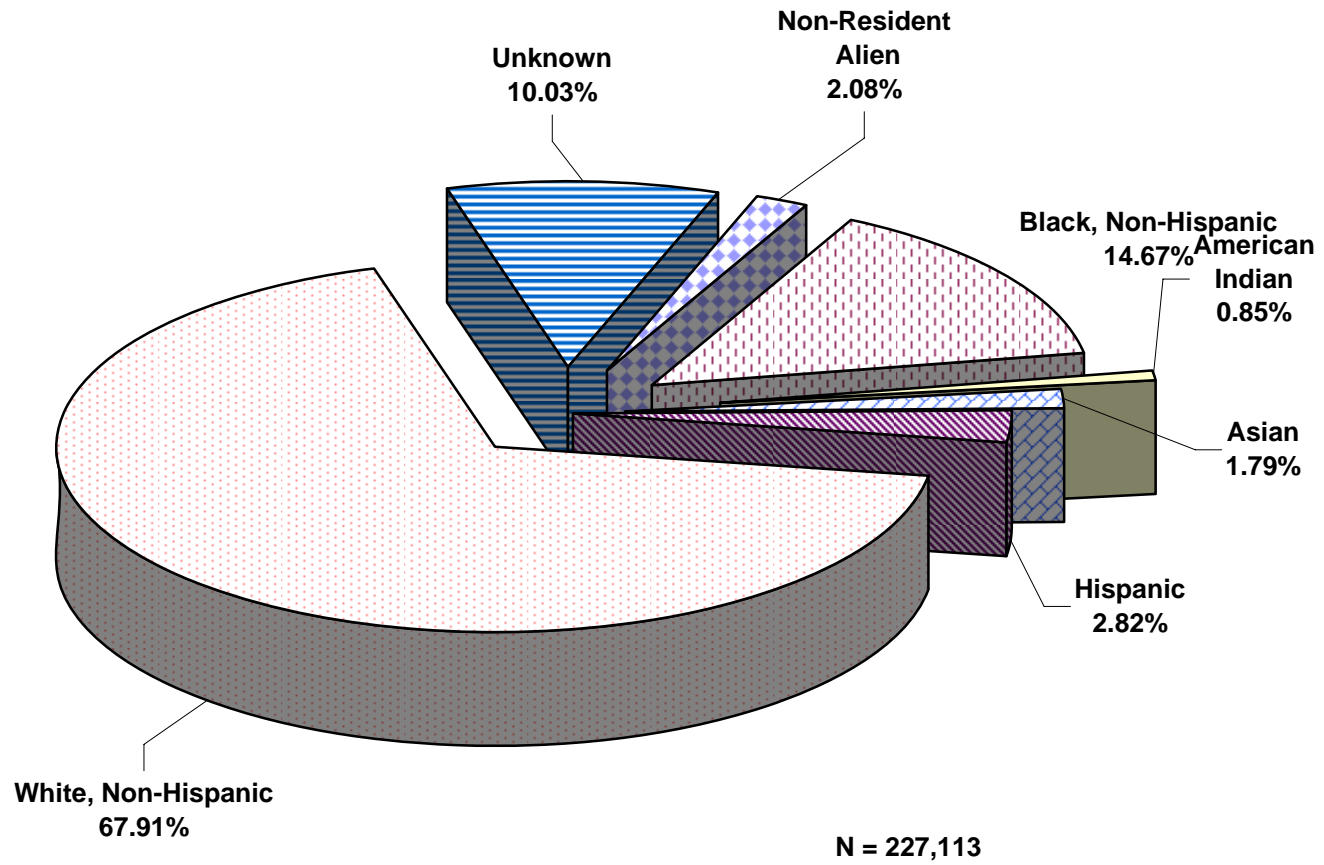


**TABLE 1: TEN YEAR HISTORY OF FALL ENROLLMENTS**

<b>COMMUNITY COLLEGE</b>	<b>1997</b>	<b>1998</b>	<b>1999</b>	<b>2000</b>	<b>2001</b>	<b>2002</b>	<b>2003</b>	<b>2004</b>	<b>2005</b>	<b>2006</b>	<b>2007</b>	<b>% Change From 06 to 07</b>
Alpena	1,865	1,890	1,871	1,854	1,933	2,055	1,937	1,853	1,887	1,921	2,058	7.13%
Bay de Noc	2,206	2,240	2,040	2,073	2,198	2,378	2,552	2,355	2,254	2,141	2,203	2.90%
Mott	9,040	9,098	8,998	8,659	9,019	9,794	10,188	10,328	10,299	10,038	10,455	4.15%
Delta	10,007	9,472	9,599	9,358	9,764	9,987	10,450	10,459	10,274	10,082	10,406	3.21%
Glen Oaks	1,442	1,674	1,579	1,601	1,894	1,663	1,710	1,493	1,382	1,325	1,383	4.38%
Gogebic	1,278	1,211	1,219	1,106	1,170	1,179	1,036	959	905	974	975	0.10%
Grand Rapids	13,051	13,039	12,730	13,400	13,483	13,877	14,039	14,144	14,798	15,224	15,212	-0.08%
Henry Ford	13,001	12,984	12,555	12,742	11,875	10,942	13,311	12,712	12,521	12,812	13,983	9.14%
Jackson	5,575	5,366	5,042	5,069	5,285	5,614	5,913	6,049	5,870	5,807	6,173	6.30%
Kalamazoo Valley	8,655	8,793	8,934	9,319	9,911	10,413	10,438	10,634	10,585	11,173	11,113	-0.54%
Kellogg	4,673	4,870	4,955	5,300	5,886	6,412	5,534	5,647	6,200	6,100	5,553	-8.97%
Kirtland	1,357	1,222	1,175	1,307	1,409	1,496	1,918	1,873	1,627	1,624	1,897	16.81%
Lake Michigan	3,164	3,297	3,326	3,407	3,384	3,586	3,802	4,153	4,043	3,786	3,740	-1.22%
Lansing	15,690	16,443	16,677	16,011	17,358	18,302	18,575	19,471	20,057	20,394	19,465	-4.56%
Macomb	23,574	23,163	21,718	22,001	21,818	22,142	22,245	20,471	20,596	21,131	22,081	4.50%
Mid Michigan	2,372	2,331	2,427	2,316	2,350	2,087	2,979	3,232	3,276	3,480	3,918	12.59%
Monroe County	3,575	3,629	3,568	3,555	3,649	3,828	3,943	4,177	4,193	4,368	4,433	1.49%
Montcalm	2,185	2,036	1,833	1,545	1,520	1,642	1,802	2,080	2,197	2,451	2,717	10.85%
Muskegon	4,620	4,325	4,287	4,311	4,409	4,830	4,941	4,797	4,707	4,466	4,711	5.49%
North Central	2,011	2,184	2,108	2,196	2,248	2,547	2,738	2,699	2,792	2,788	2,770	-0.65%
Northwestern	3,872	4,090	4,114	3,965	4,251	4,479	4,471	4,609	4,580	4,604	4,499	-2.28%
Oakland	24,223	24,237	23,244	23,188	23,503	23,713	24,145	24,296	24,287	24,123	24,532	1.70%
St. Clair County	4,004	3,862	3,729	3,972	4,061	4,268	4,362	4,193	4,087	3,983	4,270	7.21%
Schoolcraft	9,420	9,292	8,988	9,016	9,530	9,743	10,159	10,213	10,604	11,105	12,148	9.39%
Southwestern	2,802	3,019	3,131	3,047	3,172	3,023	2,948	2,777	2,676	2,500	2,494	-0.24%
Washtenaw	10,488	10,441	10,820	11,089	11,171	11,985	12,070	12,022	12,193	12,768	12,068	-5.48%
Wayne County	9,413	9,529	8,265	9,008	10,433	11,134	11,673	11,858	14,764	19,265	20,504	6.43%
West Shore	1,376	1,338	1,262	1,273	1,280	1,334	1,318	1,320	1,393	1,336	1,352	1.20%
<b>TOTAL</b>	<b>194,939</b>	<b>195,075</b>	<b>190,194</b>	<b>191,688</b>	<b>197,964</b>	<b>204,453</b>	<b>211,197</b>	<b>210,874</b>	<b>215,047</b>	<b>221,769</b>	<b>227,113</b>	<b>2.41%</b>

*\*Includes only those students taking at least one course creditable towards a degree as of October 15 or 1/10 of Fall Semester.*

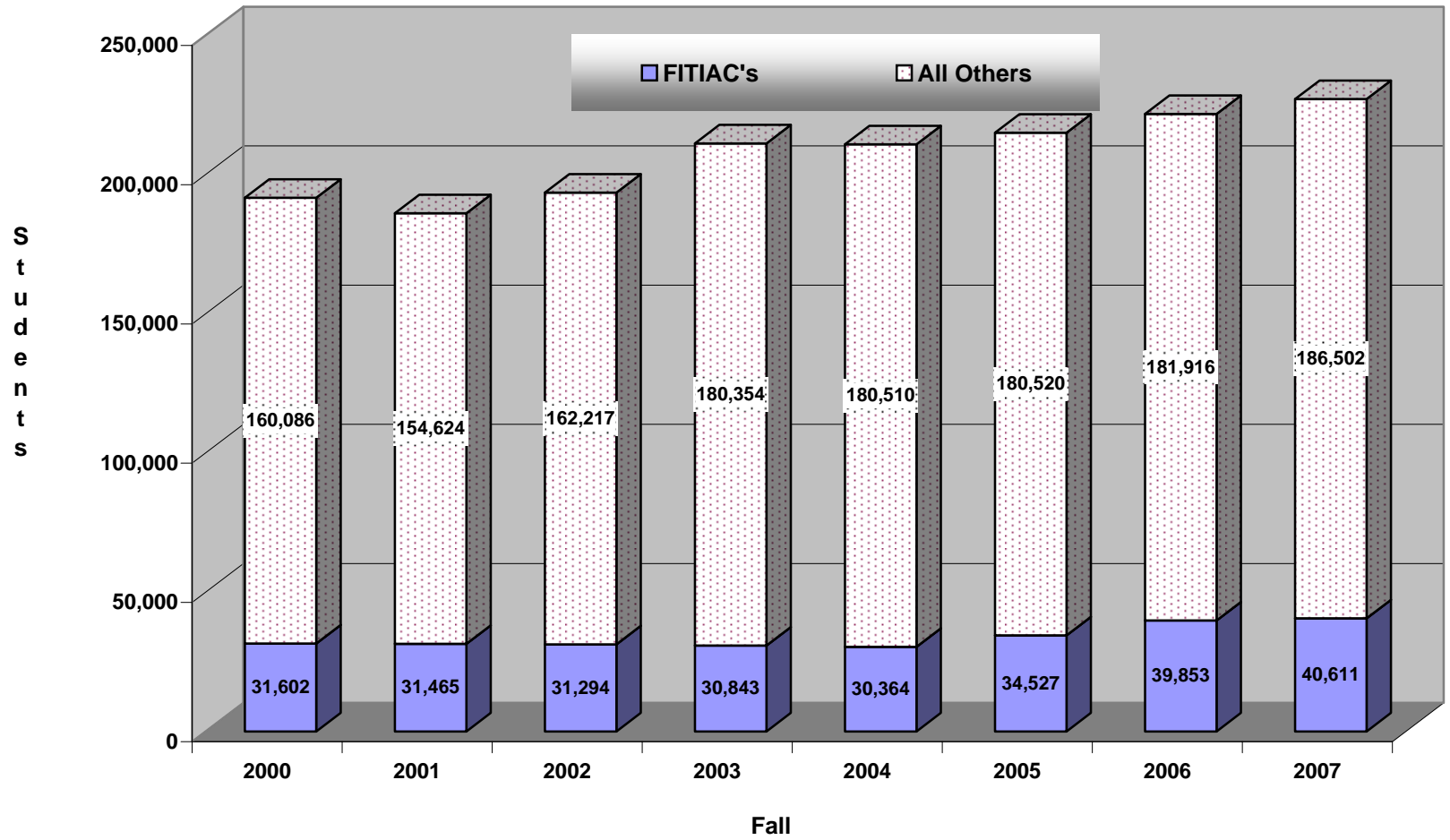
# FALL 2007 ENROLLMENT BY ETHNICITY



**TABLE 2: FALL 2007 ENROLLMENT BY ETHNICITY AND GENDER**

COMMUNITY COLLEGE	Non-Resident Alien		Black Non-Hispanic		American Indian		Asian		Hispanic		White Non-Hispanic		Unknown		TOTAL STUDENTS		GRAND TOTAL	Fall 2006
	Men	Wom	Men	Wom	Men	Wom	Men	Wom	Men	Wom	Men	Wom	Men	Wom	Men	Wom		
Alpena	1	0	11	5	10	10	8	5	8	6	802	1,060	75	57	915	1,143	<b>2,058</b>	1,921
Bay De Noc	0	0	4	4	35	51	5	7	8	5	782	1,221	39	42	873	1,330	<b>2,203</b>	2,141
Mott	14	17	555	1,183	50	59	30	52	89	147	2,489	3,774	856	1,140	4,083	6,372	<b>10,455</b>	10,038
Delta	29	31	273	526	25	33	27	35	183	265	3,793	4,648	234	304	4,564	5,842	<b>10,406</b>	10,082
Glen Oaks	4	1	20	20	9	4	5	14	19	23	492	750	8	14	557	826	<b>1,383</b>	1,325
Gogebic	0	4	5	3	10	11	0	3	5	7	351	568	6	2	377	598	<b>975</b>	974
Grand Rapids	27	46	730	886	63	84	219	201	446	513	5,752	5,942	136	167	7,373	7,839	<b>15,212</b>	15,224
Henry Ford	6	3	894	2,153	30	35	129	116	153	251	3,299	3,780	1,305	1,829	5,816	8,167	<b>13,983</b>	12,812
Jackson	6	10	125	186	24	35	21	42	70	134	1,883	3,288	182	167	2,311	3,862	<b>6,173</b>	5,807
Kalamazoo Valley	40	39	520	648	38	42	91	113	159	197	4,183	4,632	215	196	5,246	5,867	<b>11,113</b>	11,173
Kellogg	8	17	131	316	16	34	27	39	44	86	1,338	2,800	246	451	1,810	3,743	<b>5,553</b>	6,100
Kirtland	0	0	13	4	11	20	1	3	7	10	736	996	40	56	808	1,089	<b>1,897</b>	1,624
Lake Michigan	3	6	204	432	16	20	40	39	46	99	1,035	1,475	146	179	1,490	2,250	<b>3,740</b>	3,786
Lansing	170	229	732	883	69	119	213	246	384	511	5,660	7,164	1,464	1,621	8,692	10,773	<b>19,465</b>	20,394
Macomb	465	548	523	817	47	49	277	247	137	175	8,138	8,722	940	996	10,527	11,554	<b>22,081</b>	21,131
Mid Michigan	10	6	48	40	20	56	10	8	44	42	1,363	2,130	68	73	1,563	2,355	<b>3,918</b>	3,480
Monroe	7	10	28	44	11	17	13	12	39	59	1,582	2,269	154	188	1,834	2,599	<b>4,433</b>	4,368
Montcalm	0	0	0	5	3	13	1	5	9	17	543	1,227	286	608	842	1,875	<b>2,717</b>	2,451
Muskegon	1	0	149	260	27	38	17	18	63	88	1,743	2,036	119	152	2,119	2,592	<b>4,711</b>	4,466
North Central	0	0	7	5	36	86	5	16	10	15	880	1,432	117	161	1,055	1,715	<b>2,770</b>	2,788
Northwestern Michigan	18	15	14	10	34	75	16	19	28	37	1,701	2,244	142	146	1,953	2,546	<b>4,499</b>	4,604
Oakland	725	1,243	1,087	2,584	51	80	270	356	185	321	6,814	8,757	1,214	845	10,346	14,186	<b>24,532</b>	24,123
St. Clair County	0	2	52	73	23	34	16	11	34	59	1,445	2,383	53	85	1,623	2,647	4,270	3,983
Schoolcraft	69	92	340	666	31	44	170	167	127	144	4,085	4,998	517	698	5,339	6,809	12,148	11,105
Southwestern	30	41	54	119	2	7	13	14	30	63	737	1,270	45	69	911	1,583	<b>2,494</b>	2,500
Washtenaw	106	205	678	1,167	55	46	177	229	154	183	3,925	4,321	376	446	5,471	6,597	<b>12,068</b>	12,768
Wayne County	30	44	3,533	9,539	14	59	98	142	131	289	1,213	2,354	1,150	1,908	6,169	14,335	<b>20,504</b>	19,265
West Shore	0	0	1	3	7	22	4	4	15	22	426	797	14	37	467	885	<b>1,352</b>	1,336
<b>TOTAL</b>	<b>1,769</b>	<b>2,609</b>	<b>10,731</b>	<b>22,581</b>	<b>767</b>	<b>1,183</b>	<b>1,903</b>	<b>2,163</b>	<b>2,627</b>	<b>3,768</b>	<b>67,190</b>	<b>87,038</b>	<b>10,147</b>	<b>12,637</b>	<b>95,134</b>	<b>131,979</b>	<b>227,113</b>	221,769

### FITIAC'S AS A PERCENT OF FALL ENROLLMENT



**TABLE 3: STUDENTS THAT ARE FIRST-TIME IN ANY COLLEGE (FITAC), FALL 2007**

Community College	Non-Resident Alien		Black Non-Hispanic		American Indian		Asian		Hispanic		White Non-Hispanic		Unknown		TOTAL		GRAND TOTAL
	Men	Wom	Men	Wom	Men	Wom	Men	Wom	Men	Wom	Men	Wom	Men	Wom	MEN	WOMEN	
Alpena	0	0	6	0	6	5	0	2	1	3	230	213	5	7	248	230	478
Bay De Noc	0	0	3	2	9	18	1	1	4	3	245	284	17	19	279	327	606
Mott	2	1	62	72	2	1	2	1	10	10	207	213	70	55	355	353	708
Delta College	5	0	58	80	3	5	2	5	31	38	684	664	82	79	865	871	1,736
Glen Oaks	3	0	9	4	2	2	2	2	6	1	77	95	3	3	102	107	209
Gogebic	0	0	1	2	2	4	0	0	2	0	107	96	2	0	114	102	216
Grand Rapids	5	1	252	192	14	17	60	37	135	132	1,311	1,212	35	38	1,812	1,629	3,441
Henry Ford	3	1	307	505	3	7	22	10	42	52	665	598	265	395	1,307	1,568	2,875
Jackson	0	0	39	37	6	3	4	3	22	25	472	550	58	43	601	661	1,262
Kalamazoo Valley	6	2	154	144	8	8	17	17	25	30	751	749	47	41	1,008	991	1,999
Kellogg	2	4	43	54	2	6	6	5	10	22	297	370	48	57	408	518	926
Kirtland	0	0	2	0	5	1	1	0	1	3	131	135	8	10	148	149	297
Lake Michigan	0	0	49	69	2	3	7	2	13	15	235	251	20	19	326	359	685
Lansing	7	11	185	145	15	13	37	29	94	101	1,040	1,091	436	432	1,814	1,822	3,636
Macomb	32	25	53	44	1	2	9	7	8	8	574	387	76	42	753	515	1,268
Mid Michigan	2	2	14	8	3	9	2	3	15	21	440	615	30	24	506	682	1,188
Monroe County	3	4	7	10	2	1	1	1	9	15	302	346	28	40	352	417	769
Montcalm	0	0	0	1	0	1	0	0	1	2	52	73	82	138	135	215	350
Muskegon	0	0	63	64	7	10	7	3	24	34	513	478	48	82	662	671	1,333
North Central Michigan	0	0	4	2	8	17	1	4	3	2	163	273	26	27	205	325	530
Northwestern Michigan	1	0	5	1	13	9	3	3	8	11	397	393	40	34	467	451	918
Oakland	41	40	131	188	5	4	11	18	14	30	608	653	140	44	950	977	1,927
Schoolcraft	0	0	13	14	5	6	7	2	15	8	372	474	14	10	426	514	940
St. Clair County	9	5	81	94	0	6	23	11	24	17	720	680	84	97	941	910	1,851
Southwestern Michigan	2	3	9	24	1	3	2	1	8	9	179	235	15	14	216	289	505
Washtenaw	23	44	127	147	8	7	18	21	20	22	659	539	61	76	916	856	1,772
Wayne County	10	20	1,532	3,447	4	20	48	54	52	101	611	922	374	775	2,631	5,339	7,970
West Shore	0	0	0	0	3	1	2	0	3	4	103	89	3	8	114	102	216
<b>TOTAL</b>	156	163	3,209	5,350	139	189	295	242	600	719	12,145	12,678	2,117	2,609	18,661	21,950	40,611
<i>Fall 2006</i>	169	204	3,146	5,127	142	167	286	269	542	617	11,902	12,277	2,273	2,732	18,460	21,393	39,853

**TABLE 4: FULL-TIME STUDENTS THAT ARE FIRST TIME IN ANY COLLEGE (FITIACs), FALL 2007**

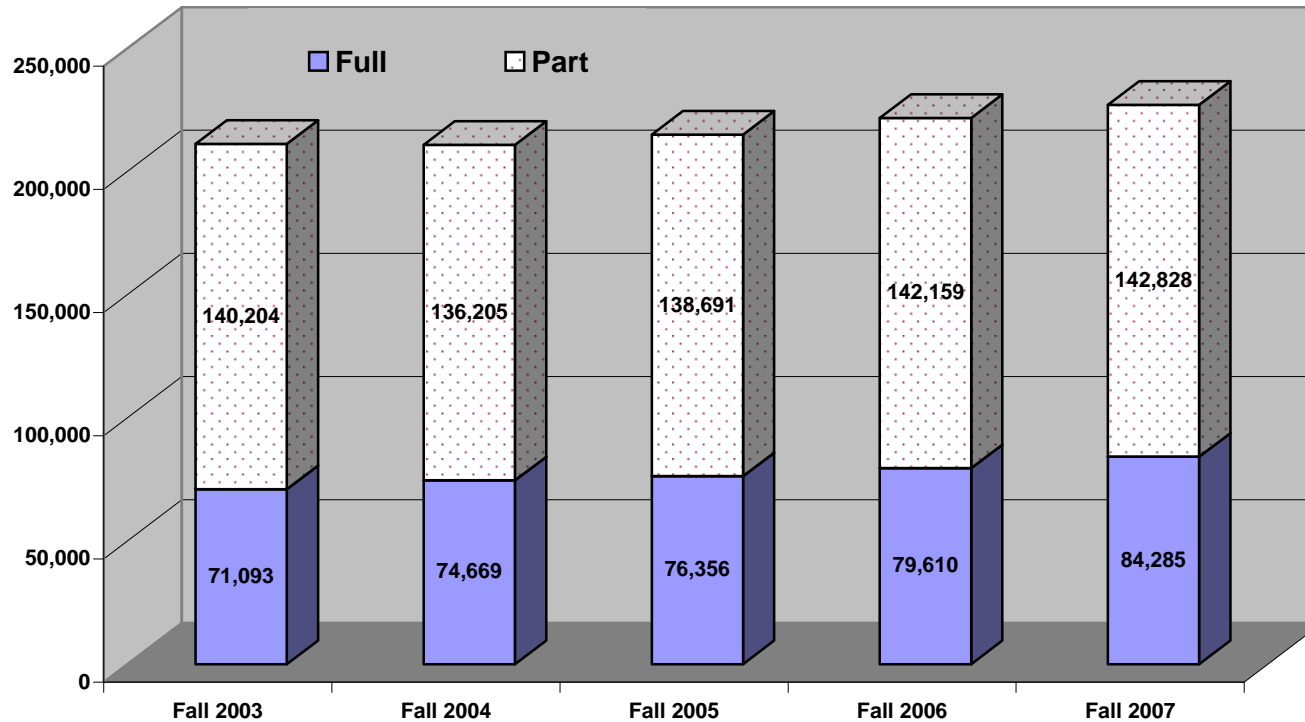
COMMUNITY COLLEGE	Non-Resident Alien		Black Non-Hispanic		American Indian		Asian		Hispanic		White Non-Hispanic		Unknown		TOTAL		GRAND TOTAL
	Men	Wom	Men	Wom	Men	Wom	Men	Wom	Men	Wom	Men	Wom	Men	Wom	Men	Wom	
Alpena	0	0	6	0	6	4	0	0	1	3	183	150	3	3	199	160	359
Bay De Noc	0	0	1	2	6	14	1	0	3	3	207	217	13	14	231	250	481
Mott	1	0	32	32	1	0	1	1	2	6	124	118	32	25	193	182	375
Delta	5	0	32	39	2	3	2	4	21	20	456	455	58	51	576	572	1,148
Glen Oaks	3	0	8	1	1	1	0	1	6	1	65	73	2	2	85	79	164
Gogebic	0	0	0	2	1	2	0	0	1	0	96	77	2	0	100	81	181
Grand Rapids	1	0	159	91	9	9	40	20	75	70	955	894	22	23	1,261	1,107	2,368
Henry Ford	3	1	167	278	3	6	14	7	20	33	414	374	159	248	780	947	1,727
Jackson	0	0	28	25	5	2	3	2	15	20	344	416	37	21	432	486	918
Kalamazoo Valley	6	2	89	78	2	3	10	10	15	14	473	440	32	25	627	572	1,199
<i>Kellogg</i>	2	4	24	27	2	2	3	2	5	15	191	215	27	28	254	293	547
Kirtland	0	0	2	0	5	1	1	0	0	1	69	70	6	4	83	76	159
Lake Michigan	0	0	28	38	1	1	4	1	6	8	154	166	10	11	203	225	428
Lansing	4	8	69	38	7	6	19	11	35	32	427	396	133	128	694	619	1,313
Macomb	11	11	30	18	1	0	5	4	4	4	366	234	52	29	469	300	769
Mid Michigan	1	2	7	4	2	3	0	2	8	10	244	300	15	13	277	334	611
Monroe	3	2	4	4	2	1	0	0	5	8	158	142	13	9	185	166	351
Montcalm	0	0	0	1	0	1	0	0	0	1	32	40	47	80	79	123	202
Muskegon	0	0	39	31	5	7	6	0	14	13	307	267	26	43	397	361	758
North Central	0	0	2	2	1	10	0	1	1	0	80	120	14	8	98	141	239
Northwestern Michigan	0	0	4	0	10	5	2	1	5	5	291	293	25	24	337	328	665
Oakland	27	17	61	86	4	2	7	9	4	21	364	368	77	20	544	523	1,067
St. Clair County	0	0	10	6	4	3	5	2	11	5	268	323	11	6	309	345	654
Schoolcraft	3	2	43	40	0	3	17	8	12	11	497	424	53	59	625	547	1,172
Southwestern	1	2	5	16	1	3	2	1	4	5	132	178	8	5	153	210	363
Washtenaw	15	20	51	66	2	2	8	11	12	12	338	285	32	38	458	434	892
Wayne County	9	16	491	947	2	6	13	7	16	27	237	269	102	215	870	1,487	2,357
West Shore	0	0	0	0	1	1	1	0	1	0	77	57	0	7	80	65	145
<b>TOTAL</b>	<b>95</b>	<b>87</b>	<b>1,392</b>	<b>1,872</b>	<b>86</b>	<b>101</b>	<b>164</b>	<b>105</b>	<b>302</b>	<b>348</b>	<b>7,549</b>	<b>7,361</b>	<b>1,011</b>	<b>1,139</b>	<b>10,599</b>	<b>11,013</b>	<b>21,612</b>
<i>Fall 2006</i>	<i>100</i>	<i>91</i>	<i>1,148</i>	<i>1,674</i>	<i>82</i>	<i>79</i>	<i>159</i>	<i>125</i>	<i>282</i>	<i>270</i>	<i>7,109</i>	<i>7,069</i>	<i>1,004</i>	<i>1,030</i>	<i>9,884</i>	<i>10,338</i>	<i>20,222</i>

**TABLE 5: PART-TIME STUDENTS THAT ARE FIRST TIME IN ANY COLLEGE (FITACs), FALL 2007**

COMMUNITY COLLEGE	Non-Resident		Black		American		Asian		Hispanic		White		Unknown		TOTAL		GRAND TOTAL
	Alien		Non-Hispanic		Indian						Non-Hispanic						
	Men	Wom	Men	Wom	Men	Wom	Men	Wom	Men	Wom	Men	Wom	Men	Wom	Men	Wom	
Alpena	0	0	0	0	0	1	0	2	0	0	47	63	2	4	49	70	119
Bay De Noc	0	0	2	0	3	4	0	1	1	0	38	67	4	5	48	77	125
Mott	1	1	30	40	1	1	1	0	8	4	83	95	38	30	162	171	333
Delta	0	0	26	41	1	2	0	1	10	18	228	209	24	28	289	299	588
Glen Oaks	0	0	1	3	1	1	2	1	0	0	12	22	1	1	17	28	45
Gogebic	0	0	1	0	1	2	0	0	1	0	11	19	0	0	14	21	35
Grand Rapids	4	1	93	101	5	8	20	17	60	62	356	318	13	15	551	522	1,073
Henry Ford	0	0	140	227	0	1	8	3	22	19	251	224	106	147	527	621	1,148
Jackson	0	0	11	12	1	1	1	1	7	5	128	134	21	22	169	175	344
Kalamazoo Valley	0	0	65	66	6	5	7	7	10	16	278	309	15	16	381	419	800
Kellogg	0	0	19	27	0	4	3	3	5	7	106	155	21	29	154	225	379
Kirtland	0	0	0	0	0	0	0	0	1	2	62	65	2	6	65	73	138
Lake Michigan	0	0	21	31	1	2	3	1	7	7	81	85	10	8	123	134	257
Lansing	3	3	116	107	8	7	18	18	59	69	613	695	303	304	1,120	1,203	2,323
Macomb	21	14	23	26	0	2	4	3	4	4	208	153	24	13	284	215	499
Mid Michigan	1	0	7	4	1	6	2	1	7	11	196	315	15	11	229	348	577
Monroe	0	2	3	6	0	0	1	1	4	7	144	204	15	31	167	251	418
Montcalm	0	0	0	0	0	0	0	0	1	1	20	33	35	58	56	92	148
Muskegon	0	0	24	33	2	3	1	3	10	21	206	211	22	39	265	310	575
North Central	0	0	2	0	7	7	1	3	2	2	83	153	12	19	107	184	291
Northwestern Michigar	1	0	1	1	3	4	1	2	3	6	106	100	15	10	130	123	253
Oakland	14	23	70	102	1	2	4	9	10	9	244	285	63	24	406	454	860
St. Clair County	0	0	3	8	1	3	2	0	4	3	104	151	3	4	117	169	286
Schoolcraft	6	3	38	54	0	3	6	3	12	6	223	256	31	38	316	363	679
Southwestern	1	1	4	8	0	0	0	0	4	4	47	57	7	9	63	79	142
Washtenaw	8	24	76	81	6	5	10	10	8	10	321	254	29	38	458	422	880
Wayne County	1	4	1041	2500	2	14	35	47	36	74	374	653	272	560	1,761	3,852	5,613
West Shore	0	0	0	0	2	0	1	0	2	4	26	32	3	1	34	37	71
<b>TOTAL</b>	<b>61</b>	<b>76</b>	<b>1817</b>	<b>3478</b>	<b>53</b>	<b>88</b>	<b>131</b>	<b>137</b>	<b>298</b>	<b>371</b>	<b>4596</b>	<b>5317</b>	<b>1106</b>	<b>1470</b>	<b>8,062</b>	<b>10,937</b>	<b>18,999</b>
<i>Fall 2006</i>	69	113	1,998	3,453	60	88	127	144	260	347	4,793	5,208	1,269	1,702	8,576	11,055	19,631



### Status of Fall Enrollment, Fall 2003 Through Fall 2007



*Full-Time enrollment has continuously increased since Fall 2003, exhibiting an overall increase of 18.6% since Fall 2003 and a 6% increase from Fall 2006 to Fall 2007. Part-Time enrollment has also increased, however, not as dramatically as full-time enrollment. Part-Time enrollment increased 1.9% since 2003 and the increase from 2006 to 2007 was less than 1%.*

**TABLE 6: FALL ENROLLMENT BY STATUS, 2007**

	FULL-TIME		PART-TIME		TOTAL		TOTAL	%	%
	MEN	WOMEN	MEN	WOMEN	MEN	WOMEN	STUDENTS	Full-Time	Part-Time
Alpena	535	571	380	572	915	1,143	2,058	53.74%	46.26%
Bay De Noc	567	691	306	639	873	1,330	2,203	57.10%	42.90%
Mott	1,650	2,093	2,433	4,279	4,083	6,372	10,455	35.80%	64.20%
Delta	2,082	2,255	2,482	3,587	4,564	5,842	10,406	41.68%	58.32%
Glen Oaks	210	348	347	478	557	826	1,383	40.35%	59.65%
Gogebic	261	330	116	268	377	598	975	60.62%	39.38%
Grand Rapids	3,412	3,254	3,961	4,585	7,373	7,839	15,212	43.82%	56.18%
Henry Ford	2,379	3,001	3,437	5,166	5,816	8,167	13,983	38.48%	61.52%
Jackson	1,097	1,576	1,214	2,286	2,311	3,862	6,173	43.30%	56.70%
Kalamazoo Valley	2,366	2,211	2,880	3,656	5,246	5,867	11,113	41.19%	58.81%
Kellogg	773	1,138	1,037	2,605	1,810	3,743	5,553	34.41%	65.59%
Kirtland	268	416	540	673	808	1,089	1,897	36.06%	63.94%
Lake Michigan	541	686	949	1,564	1,490	2,250	3,740	32.81%	67.19%
Lansing	3,086	3,312	5,606	7,461	8,692	10,773	19,465	32.87%	67.13%
Macomb	4,340	4,014	6,187	7,540	10,527	11,554	22,081	37.83%	62.17%
Mid Michigan	890	1,051	673	1,304	1,563	2,355	3,918	49.54%	50.46%
Monroe	784	928	1,050	1,671	1,834	2,599	4,433	38.62%	61.38%
Montcalm	377	868	465	1,007	842	1,875	2,717	45.82%	54.18%
Muskegon	1,033	942	1,086	1,650	2,119	2,592	4,711	41.92%	58.08%
North Central	367	586	688	1,129	1,055	1,715	2,770	34.40%	65.60%
Northwestern Michiga	1,078	1,123	875	1,423	1,953	2,546	4,499	48.92%	51.08%
Oakland	4,110	4,066	6,236	10,120	10,346	14,186	24,532	33.33%	66.67%
St. Clair County	837	1,085	786	1,562	1,623	2,647	4,270	45.01%	54.99%
Schoolcraft	2,362	2,306	2,977	4,503	5,339	6,809	12,148	38.43%	61.57%
Southwestern	408	632	503	951	911	1,583	2,494	41.70%	58.30%
Washtenaw	1,948	1,923	3,523	4,674	5,471	6,597	12,068	32.08%	67.92%
Wayne County	1,504	3,091	4,665	11,244	6,169	14,335	20,504	22.41%	77.59%
West Shore	210	313	257	572	467	885	1,352	38.68%	61.32%
<b>TOTAL</b>	<b>39,475</b>	<b>44,810</b>	<b>55,659</b>	<b>87,169</b>	<b>95,134</b>	<b>131,979</b>	<b>227,113</b>	<b>37.11%</b>	<b>62.89%</b>
<i>Fall 2006</i>	<i>37,097</i>	<i>42,513</i>	<i>55,818</i>	<i>86,341</i>	<i>92,915</i>	<i>128,854</i>	<i>221,769</i>	<i>35.87%</i>	<i>64.10%</i>

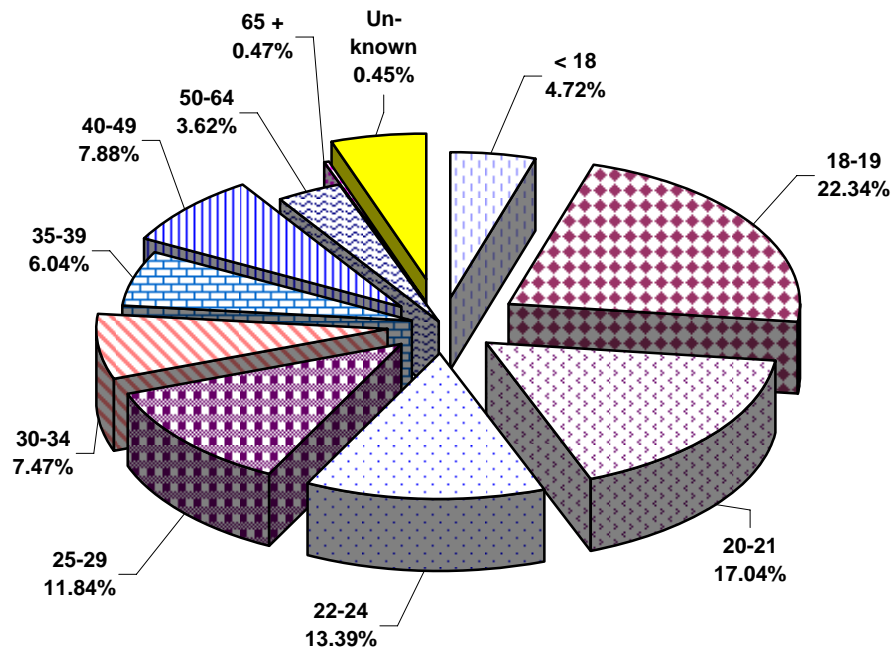
**TABLE 7: TOTAL FULL-TIME ENROLLMENTS BY GENDER AND ETHNICITY, FALL 2007**

COMMUNITY COLLEGE	Non-Resident		Black		American		Asian		Hispanic		White		Unknown		TOTAL		GRAND TOTAL
	Alien		Non-Hispanic		Indian						Non-Hispanic						
	Men	Wom	Men	Wom	Men	Wom	Men	Wom	Men	Wom	Men	Wom	Men	Wom	Men	Wom	
Alpena	1	0	9	1	7	5	5	0	5	3	475	527	33	35	535	571	1,106
Bay De Noc	0	0	1	4	17	29	4	3	5	4	514	627	26	24	567	691	1,258
Mott	7	6	215	360	21	24	8	11	28	61	1,018	1,212	353	419	1,650	2,093	3,743
Delta	16	9	110	140	8	10	8	19	75	73	1,731	1,871	134	133	2,082	2,255	4,337
Glen Oaks	3	1	16	7	2	1	0	7	9	8	177	317	3	7	210	348	558
Gogebic	0	2	4	2	6	6	0	0	2	3	247	316	2	1	261	330	591
Grand Rapids	5	9	346	285	26	32	95	83	190	209	2,698	2,571	52	65	3,412	3,254	6,666
Henry Ford	4	1	358	771	10	13	49	43	70	99	1,351	1,350	537	724	2,379	3,001	5,380
Jackson	3	7	60	83	13	17	8	13	31	55	903	1,321	79	80	1,097	1,576	2,673
Kalamazoo Valley	28	24	222	230	12	18	39	39	65	66	1,898	1,755	102	79	2,366	2,211	4,577
Kellogg	6	9	53	92	5	12	11	11	19	34	586	862	93	118	773	1,138	1,911
Kirtland	0	0	8	1	6	8	1	0	1	4	237	377	15	26	268	416	684
Lake Michigan	0	2	82	133	4	7	19	22	18	23	386	473	32	26	541	686	1,227
Lansing	72	92	228	238	25	44	87	77	139	167	2,040	2,205	495	489	3,086	3,312	6,398
Macomb	163	169	198	238	17	14	114	82	58	72	3,369	3,072	421	367	4,340	4,014	8,354
Mid Michigan	6	3	31	20	13	24	6	4	23	19	772	947	39	34	890	1,051	1,941
Monroe	6	6	8	18	7	6	3	3	16	28	673	811	71	56	784	928	1,712
Montcalm	0	0	0	2	1	4	1	2	1	8	240	574	134	278	377	868	1,245
Muskegon	1	0	72	78	11	14	14	3	30	20	848	761	57	66	1,033	942	1,975
North Central	0	0	3	4	12	37	1	6	4	6	305	488	42	45	367	586	953
Northwestern Michig:	12	12	10	4	18	24	7	8	14	12	943	998	74	65	1,078	1,123	2,201
Oakland	324	370	379	631	22	16	89	85	61	105	2,742	2,639	493	220	4,110	4,066	8,176
St. Clair County	0	0	33	28	15	16	8	2	18	15	733	999	30	25	837	1,085	1,922
Schoolcraft	39	35	117	172	16	22	58	34	54	49	1,848	1,729	230	265	2,362	2,306	4,668
Southwestern	21	33	27	39	1	4	4	6	12	11	322	519	21	20	408	632	1,040
Washtenaw	57	62	201	292	16	15	60	55	65	60	1,407	1,307	142	132	1,948	1,923	3,871
Wayne County	20	26	886	2,079	5	16	20	31	31	63	381	526	161	350	1,504	3,091	4,595
West Shore	0	0	0	1	2	5	2	0	8	2	194	290	4	15	210	313	523
<b>TOTAL</b>	<b>794</b>	<b>878</b>	<b>3,677</b>	<b>5,953</b>	<b>318</b>	<b>443</b>	<b>721</b>	<b>649</b>	<b>1,052</b>	<b>1,279</b>	<b>29,038</b>	<b>31,444</b>	<b>3,875</b>	<b>4,164</b>	<b>39,475</b>	<b>44,810</b>	<b>84,285</b>

**TABLE 8: TOTAL PART-TIME ENROLLMENTS BY GENDER AND ETHNICITY, FALL 2006**

COMMUNITY COLLEGE	Non-Resident		Black		American		Asian		Hispanic		White		Unknown		TOTAL		GRAND
	Alien		Non-Hispanic		Indian										Men	Wom	TOTAL
	Men	Wom	Men	Wom	Men	Wom	Men	Wom	Men	Wom	Men	Wom	Men	Wom	Men	Wom	TOTAL
Alpena	0	0	2	4	3	5	3	5	3	3	327	533	42	22	380	572	952
Bay De Noc	0	0	3	0	18	22	1	4	3	1	268	594	13	18	306	639	945
Mott	7	11	340	823	29	35	22	41	61	86	1,471	2,562	503	721	2,433	4,279	6,712
Delta	13	22	163	386	17	23	19	16	108	192	2,062	2,777	100	171	2,482	3,587	6,069
Glen Oaks	1	0	4	13	7	3	5	7	10	15	315	433	5	7	347	478	825
Gogebic	0	2	1	1	4	5	0	3	3	4	104	252	4	1	116	268	384
Grand Rapids	22	37	384	601	37	52	124	118	256	304	3,054	3,371	84	102	3,961	4,585	8,546
Henry Ford	2	2	536	1,382	20	22	80	73	83	152	1,948	2,430	768	1,105	3,437	5,166	8,603
Jackson	3	3	65	103	11	18	13	29	39	79	980	1,967	103	87	1,214	2,286	3,500
Kalamazoo Valley	12	15	298	418	26	24	52	74	94	131	2,285	2,877	113	117	2,880	3,656	6,536
Kellogg	2	8	78	224	11	22	16	28	25	52	752	1,938	153	333	1,037	2,605	3,642
Kirtland	0	0	5	3	5	12	0	3	6	6	499	619	25	30	540	673	1,213
Lake Michigan	3	4	122	299	12	13	21	17	28	76	649	1,002	114	153	949	1,564	2,513
Lansing	98	137	504	645	44	75	126	169	245	344	3,620	4,959	969	1,132	5,606	7,461	13,067
Macomb	302	379	325	579	30	35	163	165	79	103	4,769	5,650	519	629	6,187	7,540	13,727
Mid Michigan	4	3	17	20	7	32	4	4	21	23	591	1,183	29	39	673	1,304	1,977
Monroe	1	4	20	26	4	11	10	9	23	31	909	1,458	83	132	1,050	1,671	2,721
Montcalm	0	0	0	3	2	9	0	3	8	9	303	653	152	330	465	1,007	1,472
Muskegon	0	0	77	182	16	24	3	15	33	68	895	1,275	62	86	1,086	1,650	2,736
North Central	0	0	4	1	24	49	4	10	6	9	575	944	75	116	688	1,129	1,817
Northwestern Michigan	6	3	4	6	16	51	9	11	14	25	758	1,246	68	81	875	1,423	2,298
Oakland	401	873	708	1,953	29	64	181	271	124	216	4,072	6,118	721	625	6,236	10,120	16,356
St. Clair County	0	2	19	45	8	18	8	9	16	44	712	1,384	23	60	786	1,562	2,348
Schoolcraft	30	57	223	494	15	22	112	133	73	95	2,237	3,269	287	433	2,977	4,503	7,480
Southwestern	9	8	27	80	1	3	9	8	18	52	415	751	24	49	503	951	1,454
Washtenaw	49	143	477	875	39	31	117	174	89	123	2,518	3,014	234	314	3,523	4,674	8,197
Wayne County	10	18	2,647	7,460	9	43	78	111	100	226	832	1,828	989	1,558	4,665	11,244	15,909
West Shore	0	0	1	2	5	17	2	4	7	20	232	507	10	22	257	572	829
<b>TOTAL</b>	<b>975</b>	<b>1,731</b>	<b>7,054</b>	<b>16,628</b>	<b>449</b>	<b>740</b>	<b>1,182</b>	<b>1,514</b>	<b>1,575</b>	<b>2,489</b>	<b>38,152</b>	<b>55,594</b>	<b>6,272</b>	<b>8,473</b>	<b>55,659</b>	<b>87,169</b>	<b>142,828</b>

**TABLE 9: FALL 2007 ENROLLMENT BY AGE AND GENDER**



	Full-Time			Part-Time			Total			%	
	Men	Wom	Total	Men	Wom	Total	Men	Women	TOTAL	Men	Women
< 18	869	1,236	<b>2,105</b>	3,564	5,041	<b>8,605</b>	4,433	6,277	<b>10,710</b>	41.39%	58.61%
18-19	16,359	17,420	<b>33,779</b>	7,915	9,046	<b>16,961</b>	24,274	26,466	<b>50,740</b>	47.84%	52.16%
20-21	9,476	9,429	<b>18,905</b>	8,956	10,837	<b>19,793</b>	18,432	20,266	<b>38,698</b>	47.63%	52.37%
22-24	4,631	4,887	<b>9,518</b>	8,791	12,110	<b>20,901</b>	13,422	16,997	<b>30,419</b>	44.12%	55.88%
25-29	2,819	3,643	<b>6,462</b>	7,491	12,929	<b>20,420</b>	10,310	16,572	<b>26,882</b>	38.35%	61.65%
30-34	1,262	2,203	<b>3,465</b>	4,618	8,881	<b>13,499</b>	5,880	11,084	<b>16,964</b>	34.66%	65.34%
35-39	847	1,617	<b>2,464</b>	3,540	7,716	<b>11,256</b>	4,387	9,333	<b>13,720</b>	31.98%	68.02%
40-49	927	1,885	<b>2,812</b>	4,464	10,612	<b>15,076</b>	5,391	12,497	<b>17,888</b>	30.14%	69.86%
50-64	434	683	<b>1,117</b>	2,369	4,733	<b>7,102</b>	2,803	5,416	<b>8,219</b>	34.10%	65.90%
65 +	13	10	<b>23</b>	440	607	<b>1,047</b>	453	617	<b>1,070</b>	42.34%	57.66%
Unknown	1,838	1,797	<b>3,635</b>	3,511	4,657	<b>8,168</b>	5,349	6,454	<b>11,803</b>	45.32%	54.68%
<b>TOTAL</b>	<b>39,475</b>	<b>44,810</b>	<b>84,285</b>	<b>55,659</b>	<b>87,169</b>	<b>142,828</b>	<b>95,134</b>	<b>131,979</b>	<b>227,113</b>	<b>41.89%</b>	<b>58.11%</b>

*The mean age of a community college students is 26.4 years old.*